



# USER GUIDE

# TABLE OF CONTENTS

<b>Box Contents</b> .....	3
<b>Installation</b> .....	4
SPIRIT II .....	4
GENESIS II & GENESIS II LX .....	12
<b>Quick Start Instructions</b> .....	23
<b>Important Information</b> .....	28
Intended Use .....	28
Meat Probe Use .....	28
Disposal Requirements .....	29
Technical Specifications .....	29
FCC Compliance .....	29
IC Compliance .....	29

## Before you begin



# Enhance Your Assembly Experience

Download the free BILT™ app for  
step-by-step 3D instructions showing  
how to install your iGRILL 3.



Download on the  
**App Store**



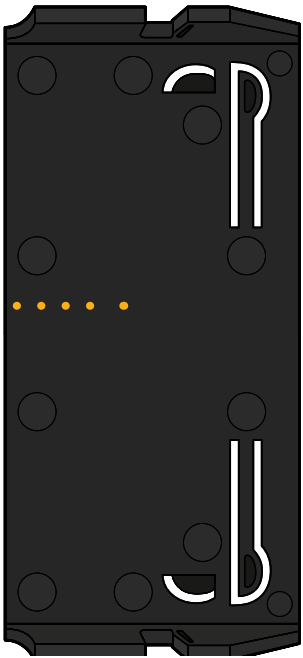
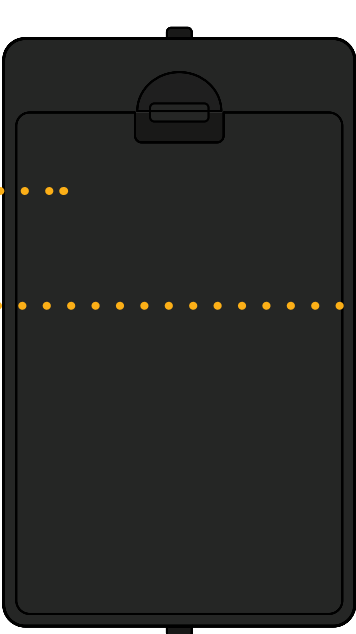
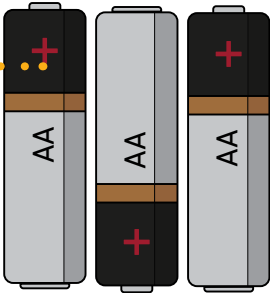
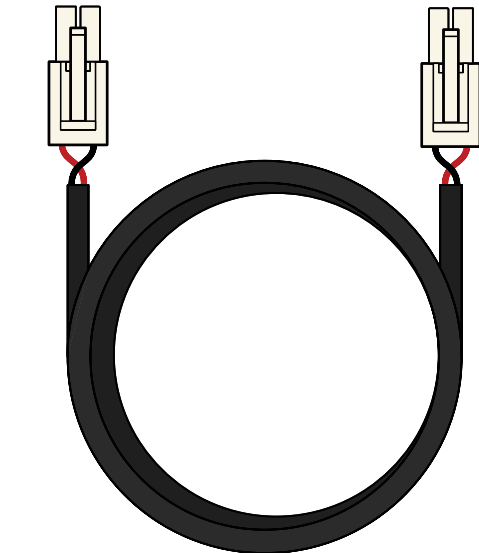
GET IT ON  
**Google Play**

# Box Contents

Battery Pack

Battery Pack Bracket

AA Batteries (3)



Battery Wire

Wire Retention Clip



LP Magnet



LP Fuel Sensor

iGRILL 3



Meat Probe



Probe Wrap

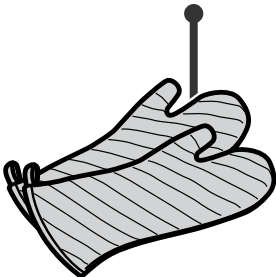


Yellow Coloured Probe Indicator

Red Coloured Probe Indicator

Probe Wrap

Meat Probe



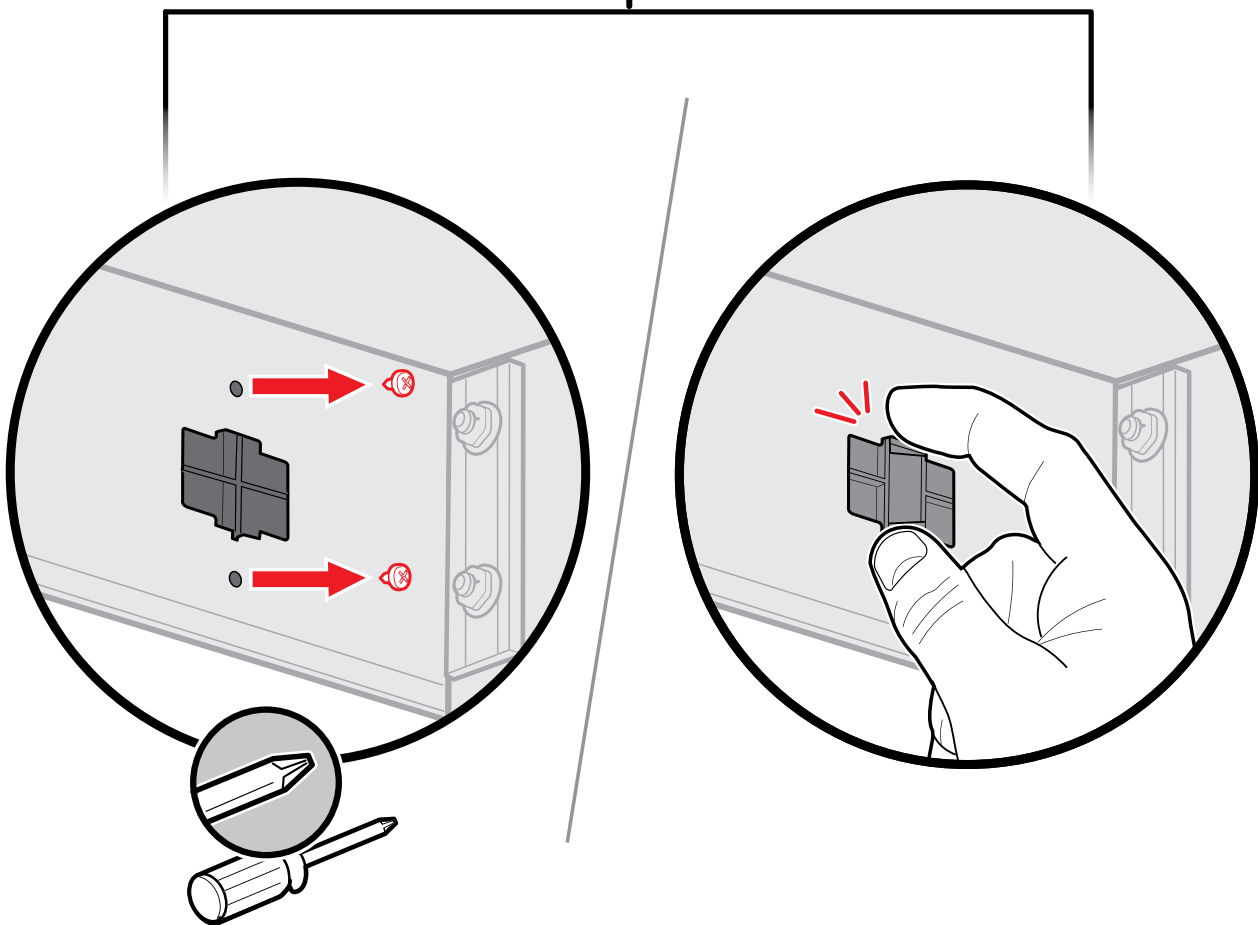
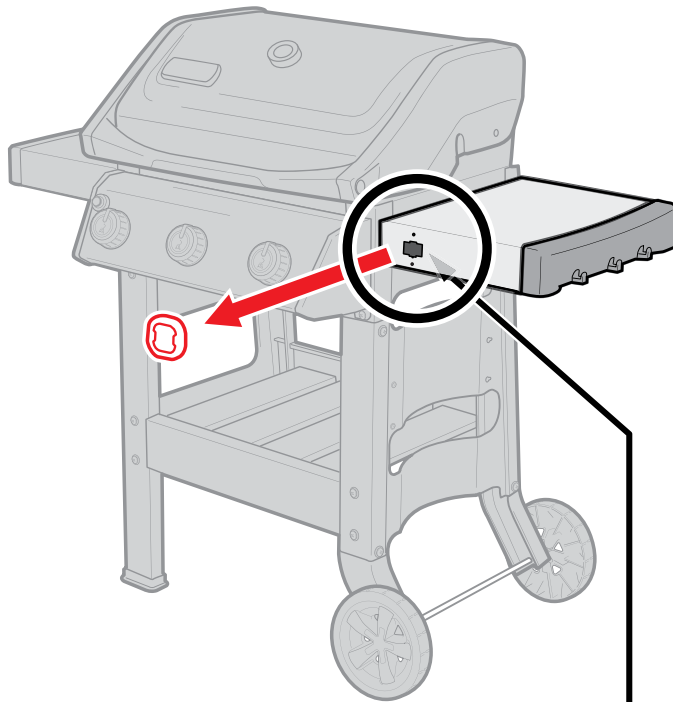
**WARNING!**  
Probe gets hot.  
Use mitts.

# Installation

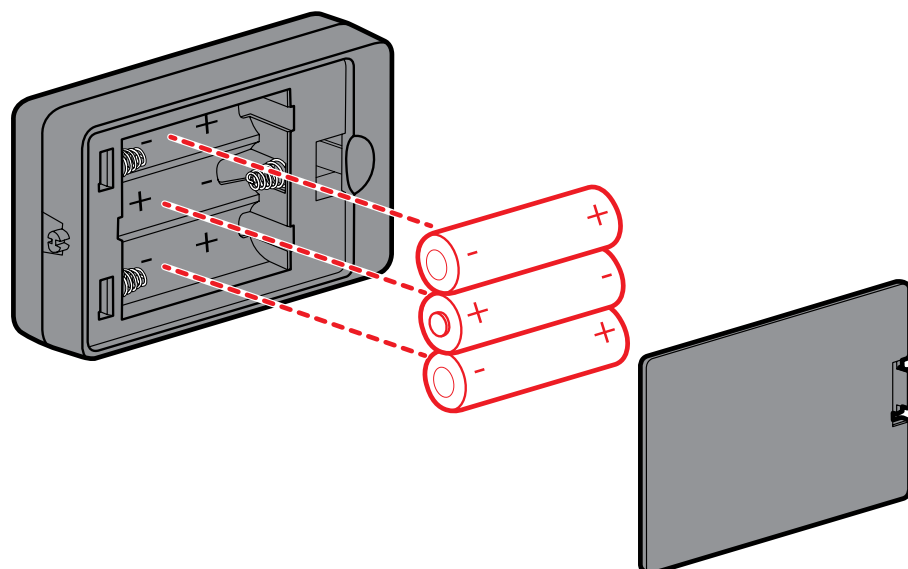
1

**SPIRIT II**  **LP**  **NG**

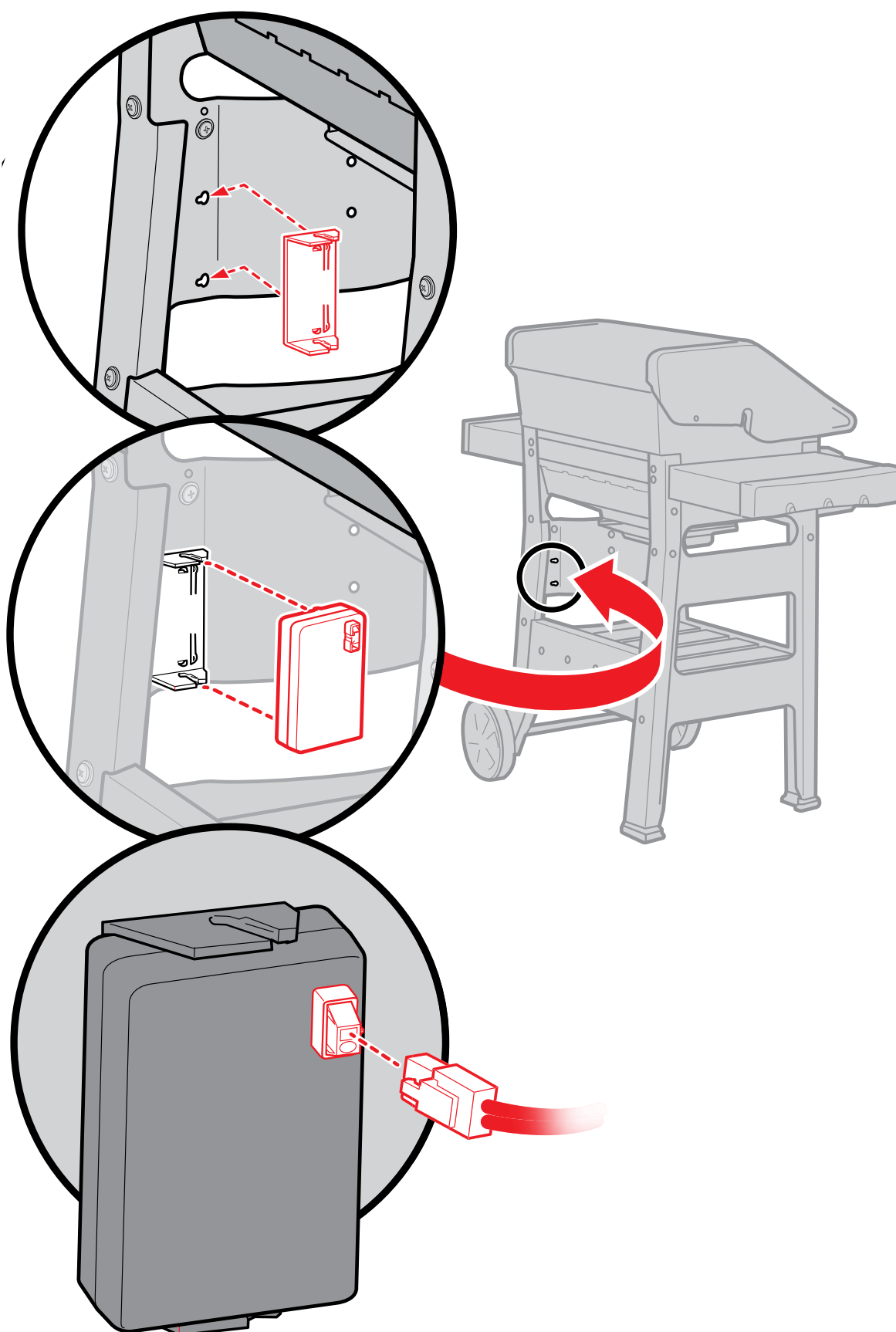
Remove cover plate. Some models may have screws.



Install batteries. Do not mix old and new batteries. Do not mix alkaline, standard or rechargeable batteries.

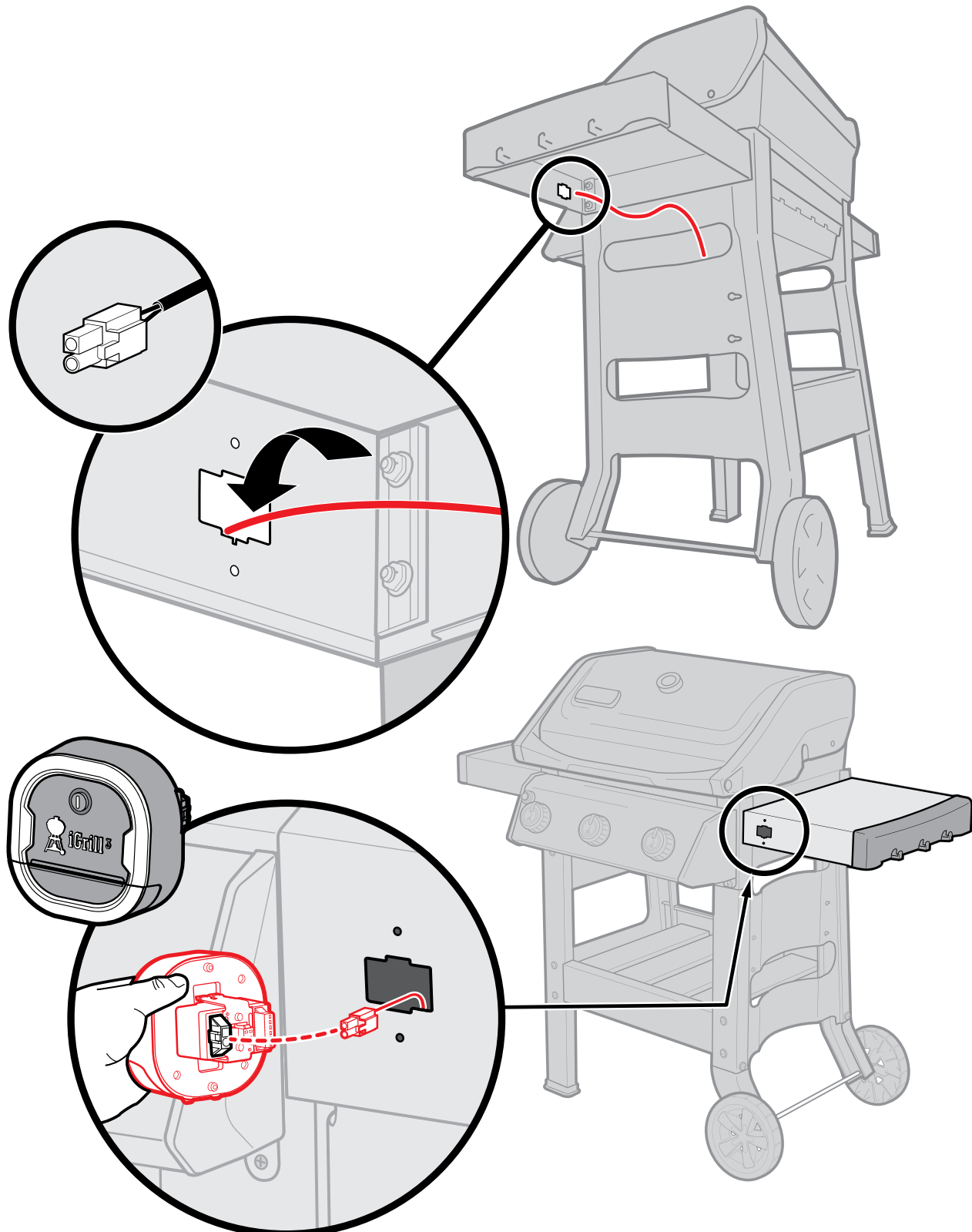


Install bracket on the inside of the wheel frame. Snap battery pack into bracket. Connect battery wire to the battery pack.





Route battery wire through front of side table. Connect battery wire to the iGRILL.

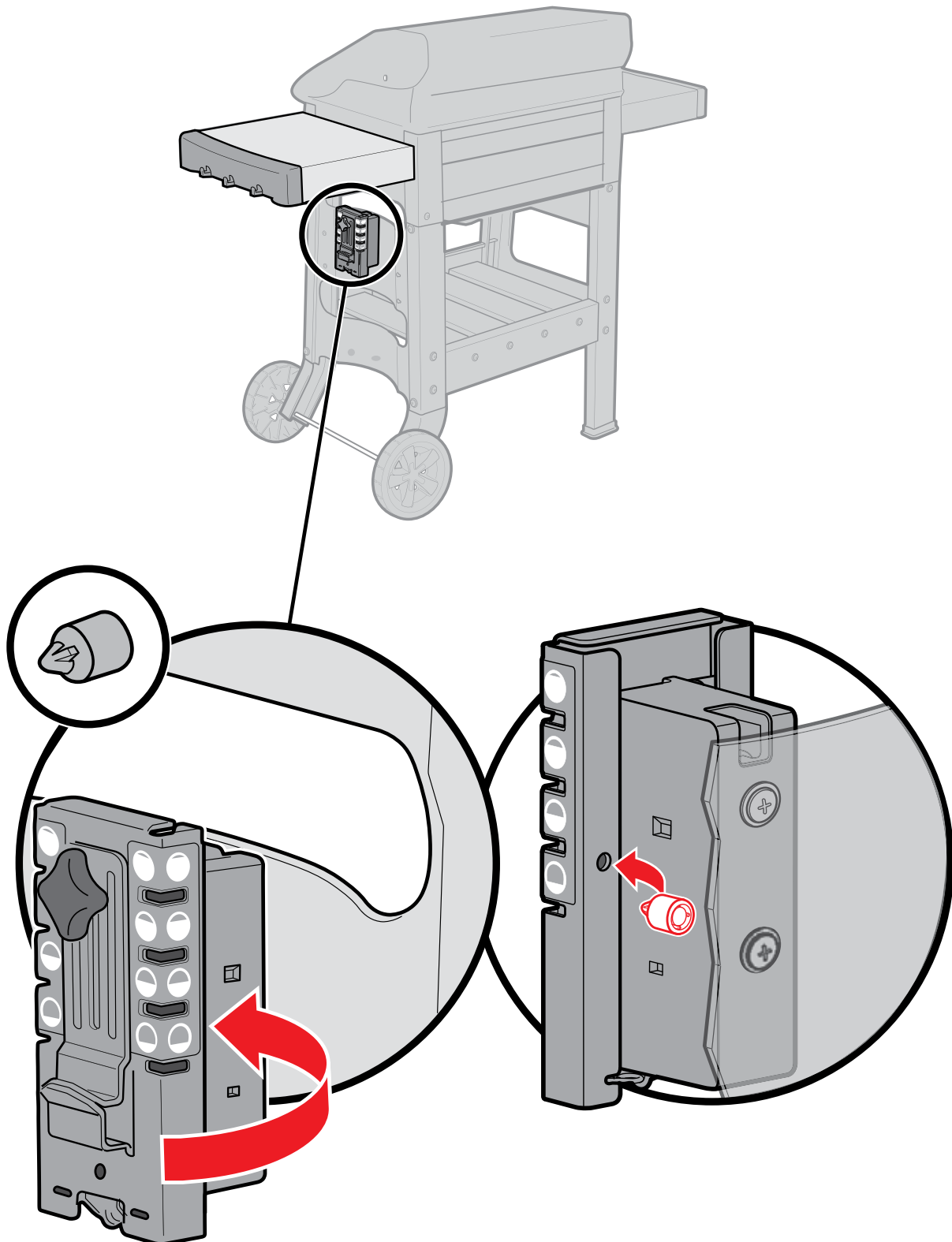


4a

**SPIRIT II**

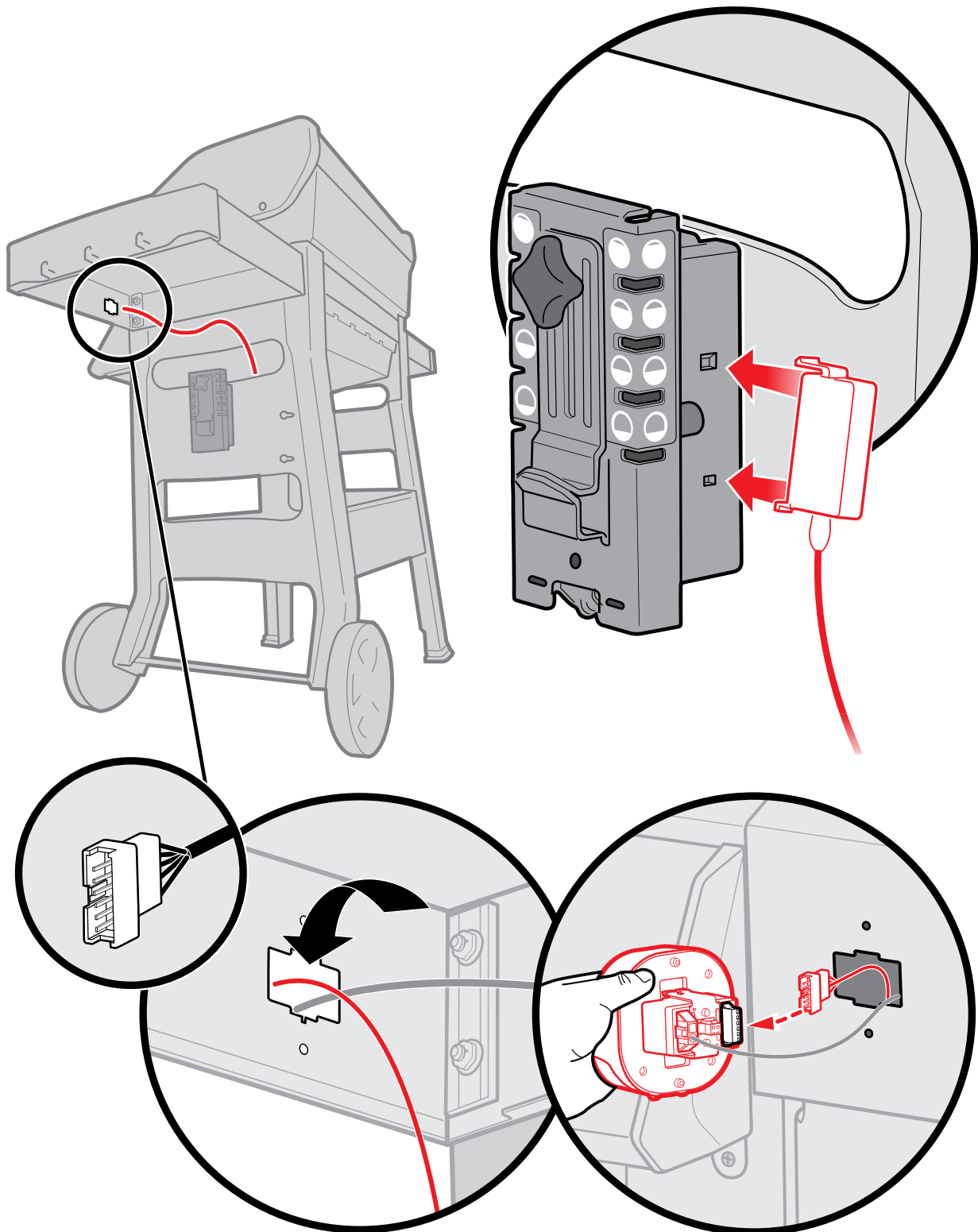


Install magnet.

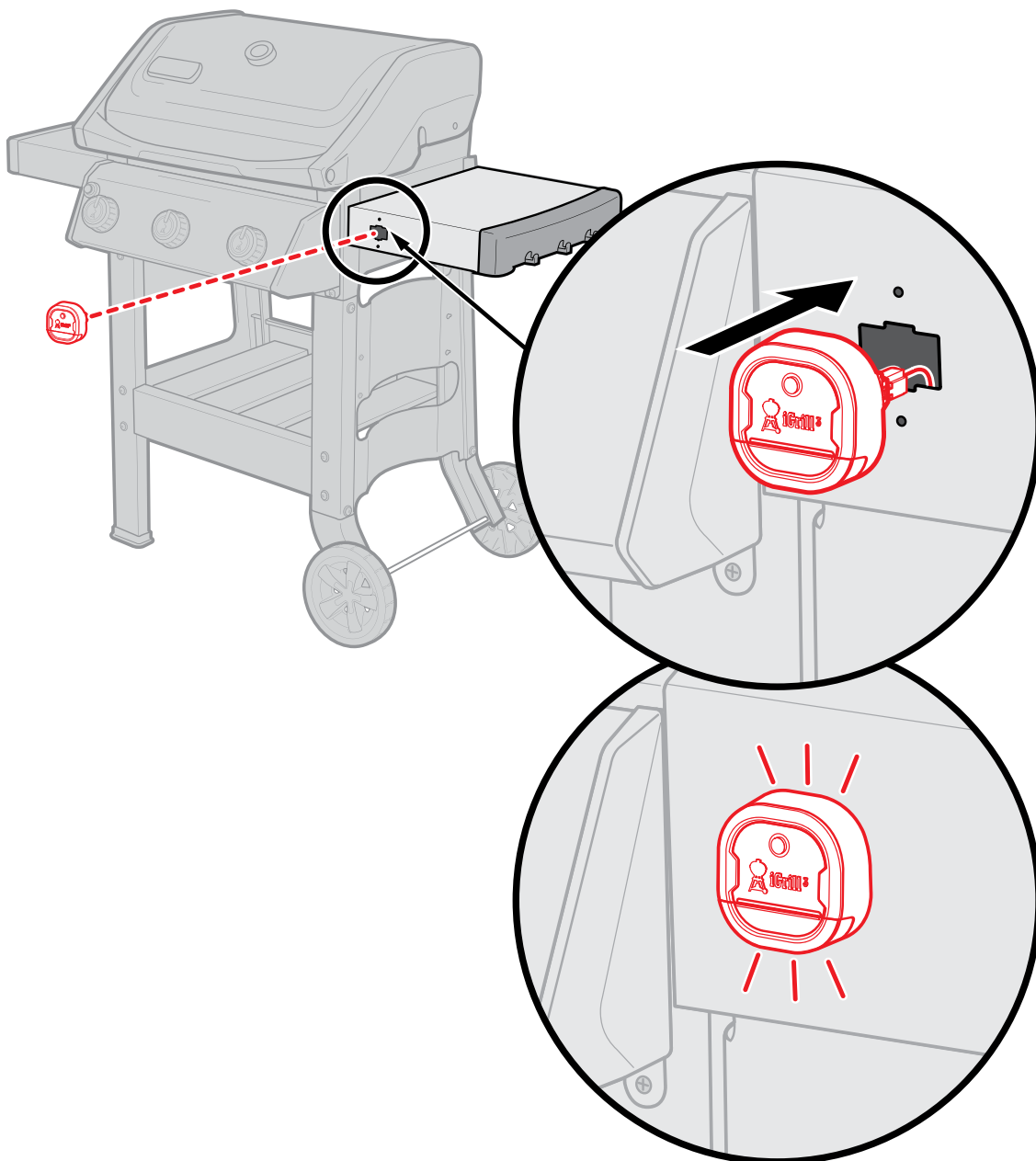




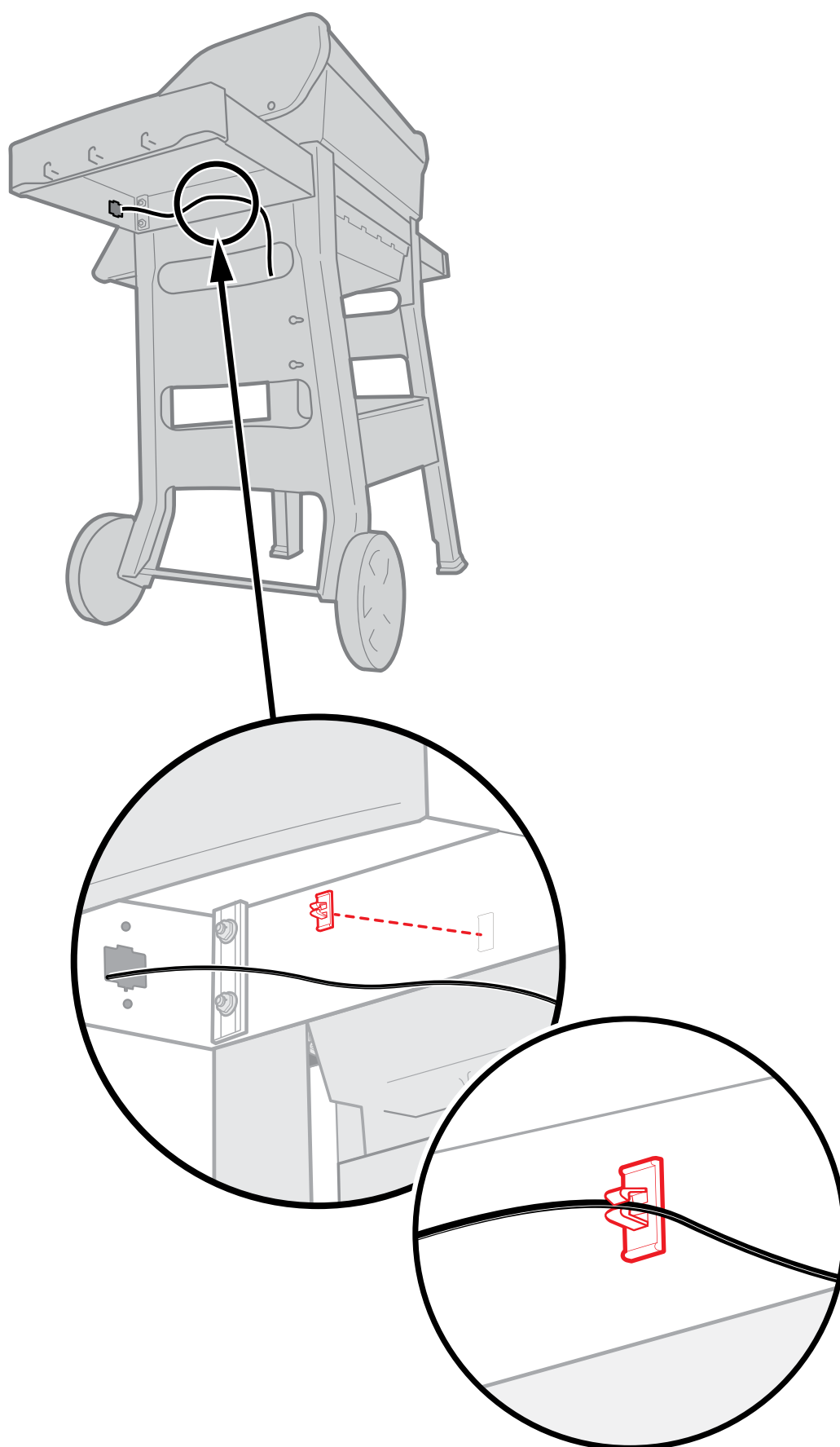
Connect LP fuel sensor.



Snap into place. No screws required.



Remove adhesive liner from wire retention clip. Apply clip to cleansed area underneath side table. Wire(s) must be secured using clip.



# Installation

1

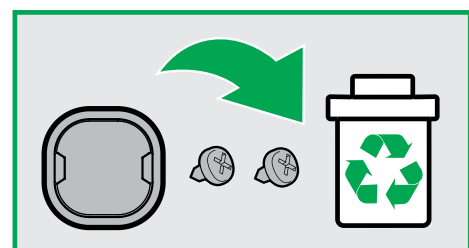
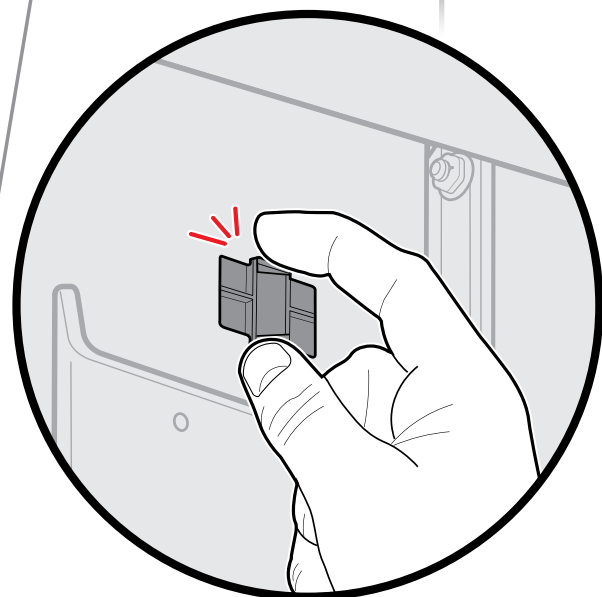
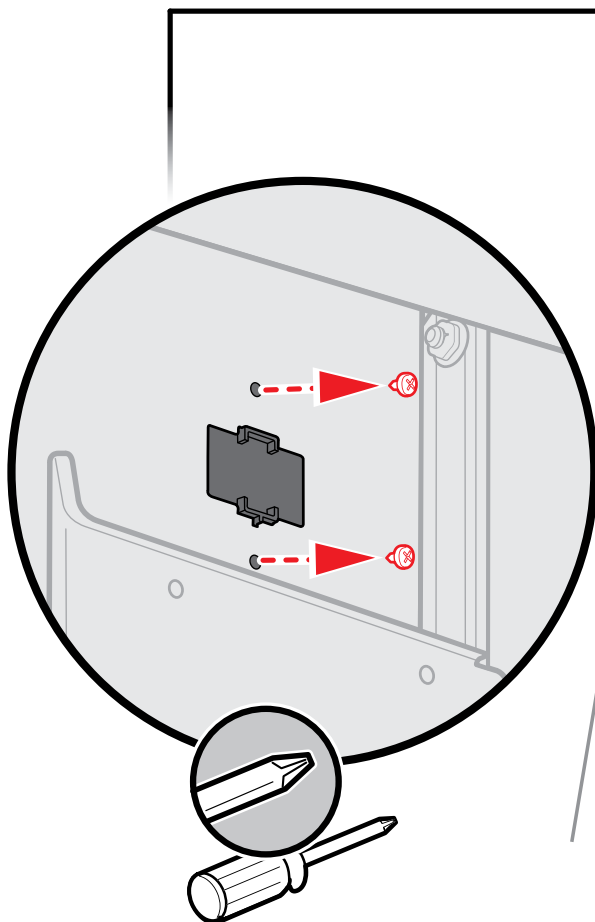
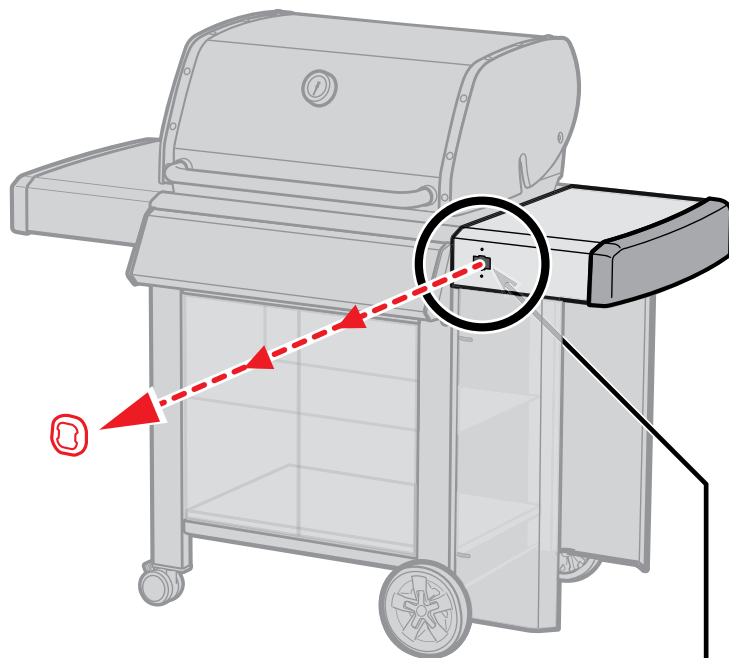
GENESIS II



GENESIS II  
LX



Remove cover plate. Some models may have screws - **OR** -

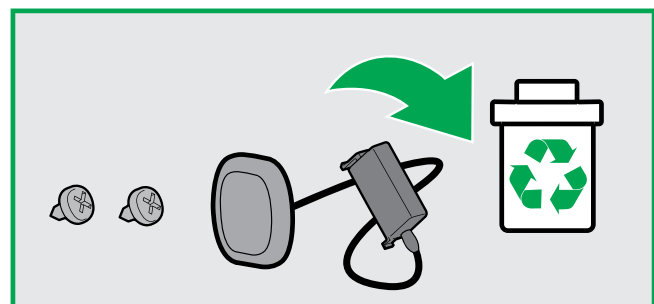
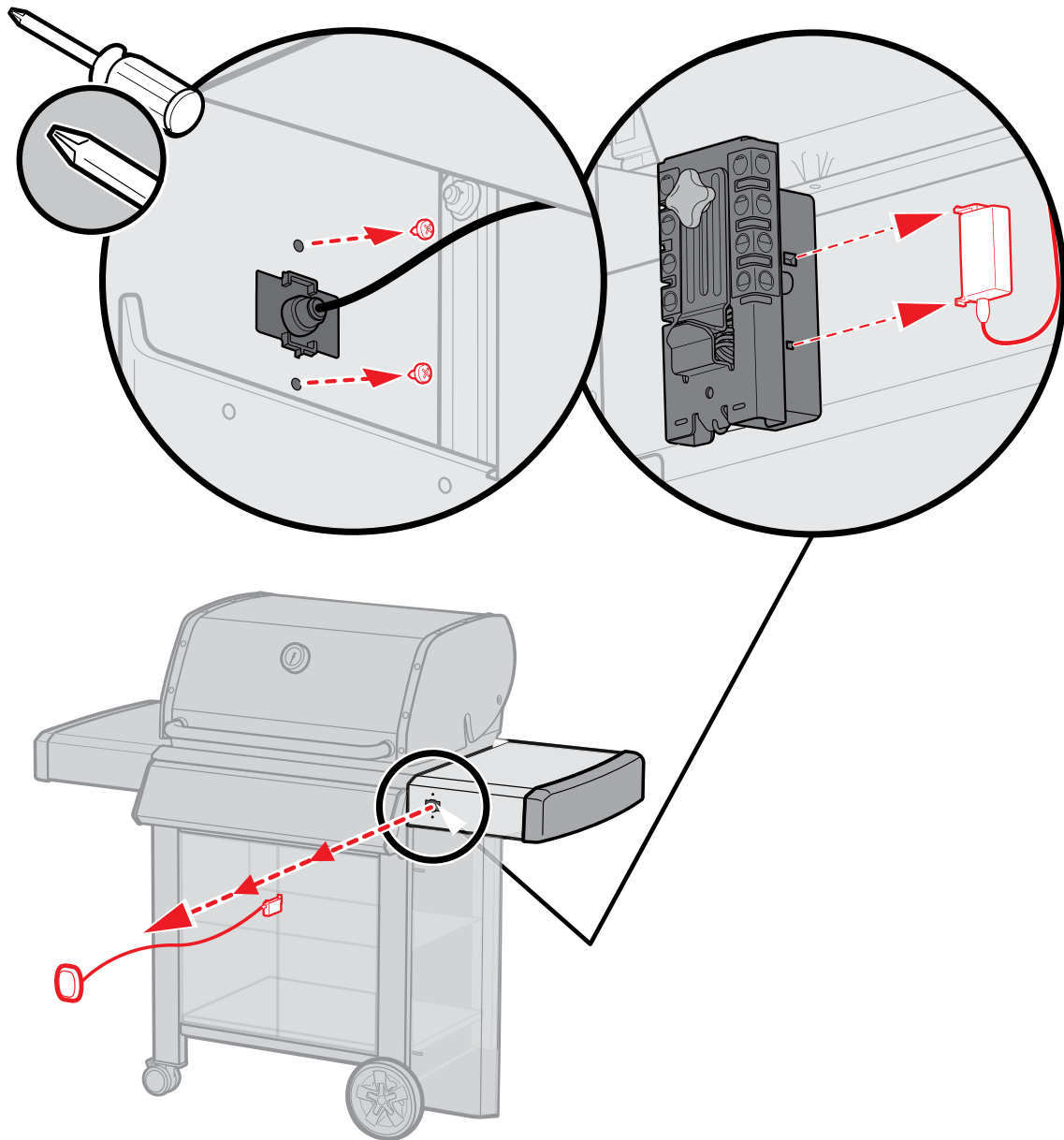


# Installation

GENESIS II  
LX



Remove LED fuel gauge.



# Installation

2

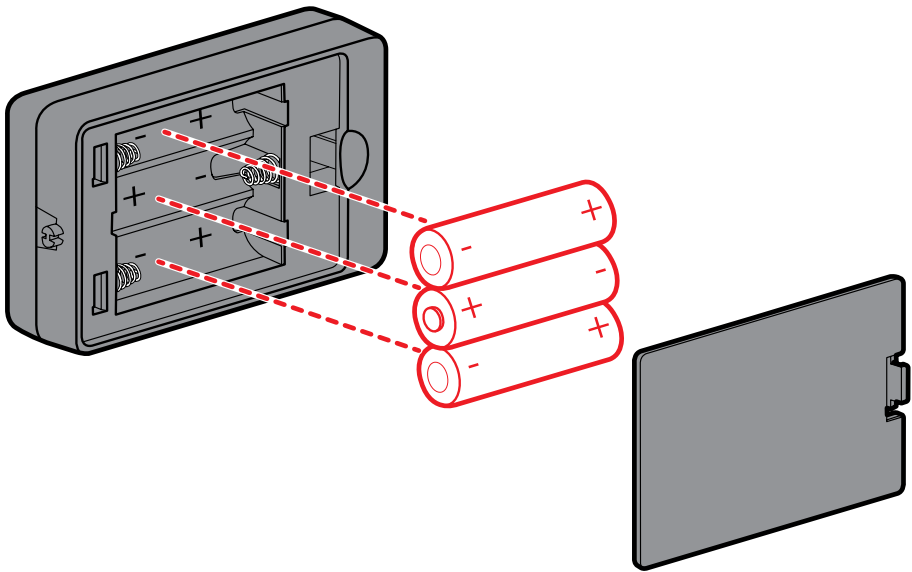
GENESIS II



GENESIS II  
LX



Install batteries. Do not mix old and new batteries. Do not mix alkaline, standard or rechargeable batteries.





# Installation

3

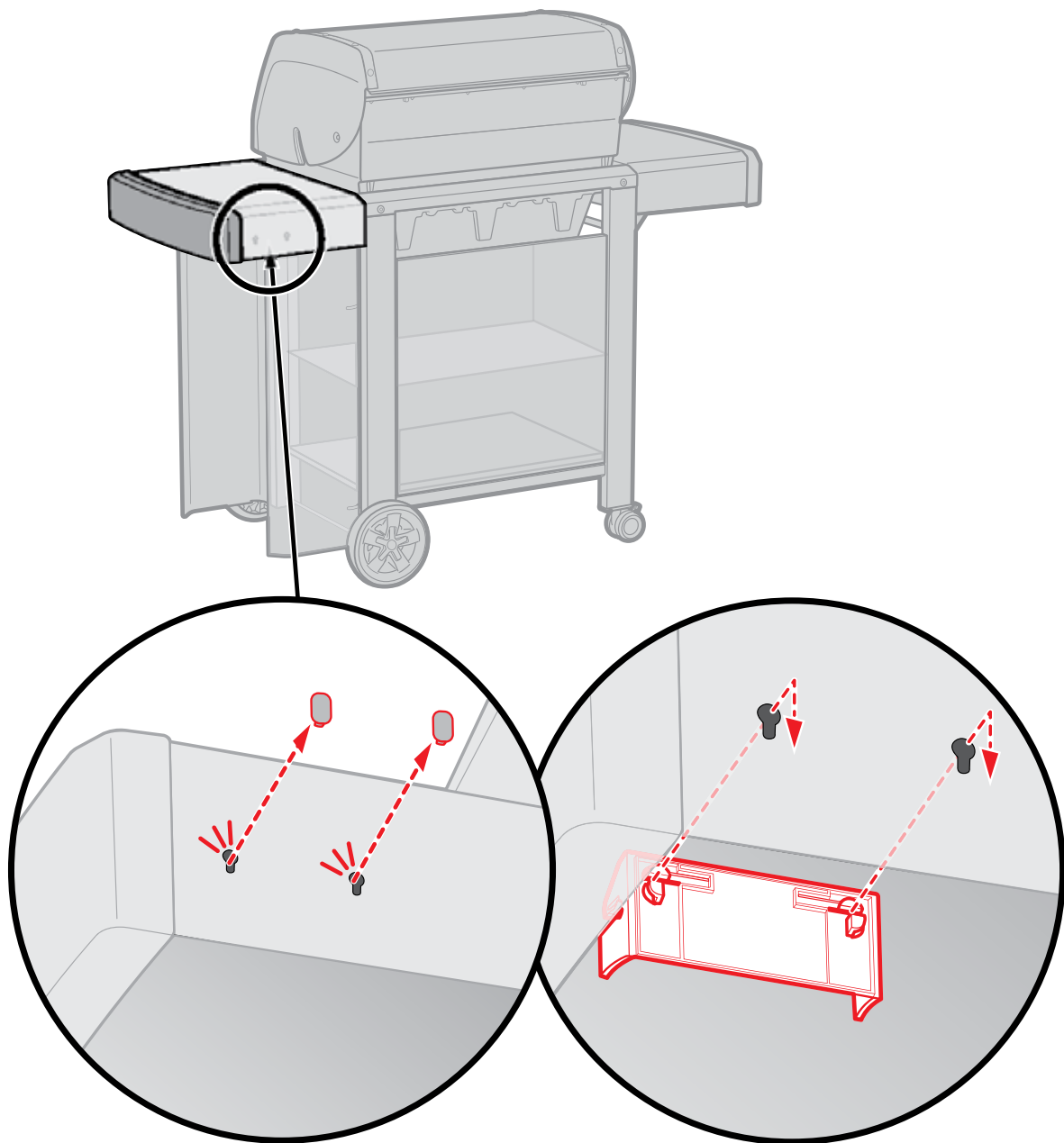
GENESIS II



GENESIS II  
LX



Install bracket underneath side table.



# Installation

4

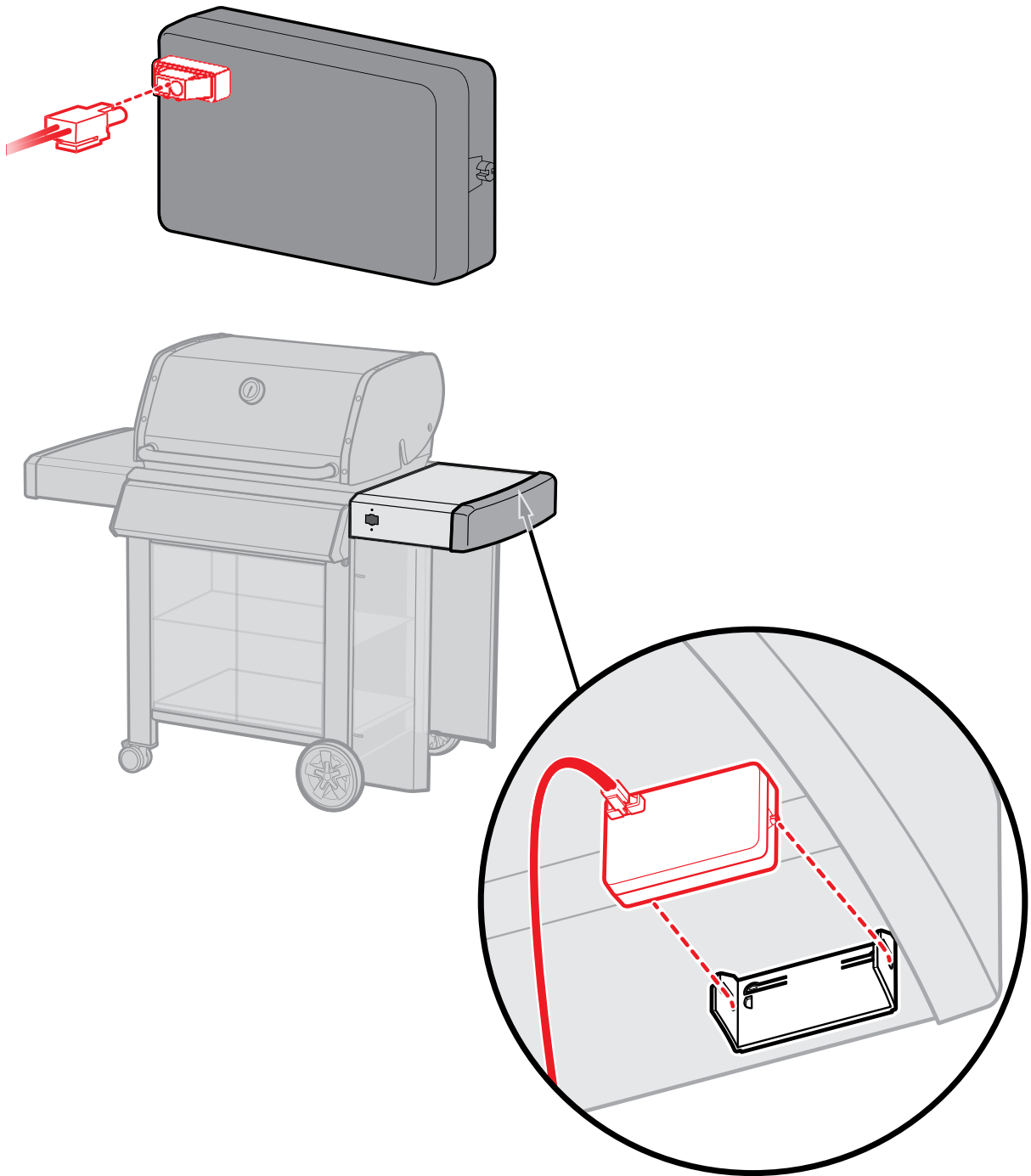
GENESIS II



GENESIS II  
LX



Connect the battery wire to the battery pack. Then, snap the battery pack into the bracket.



# Installation

5

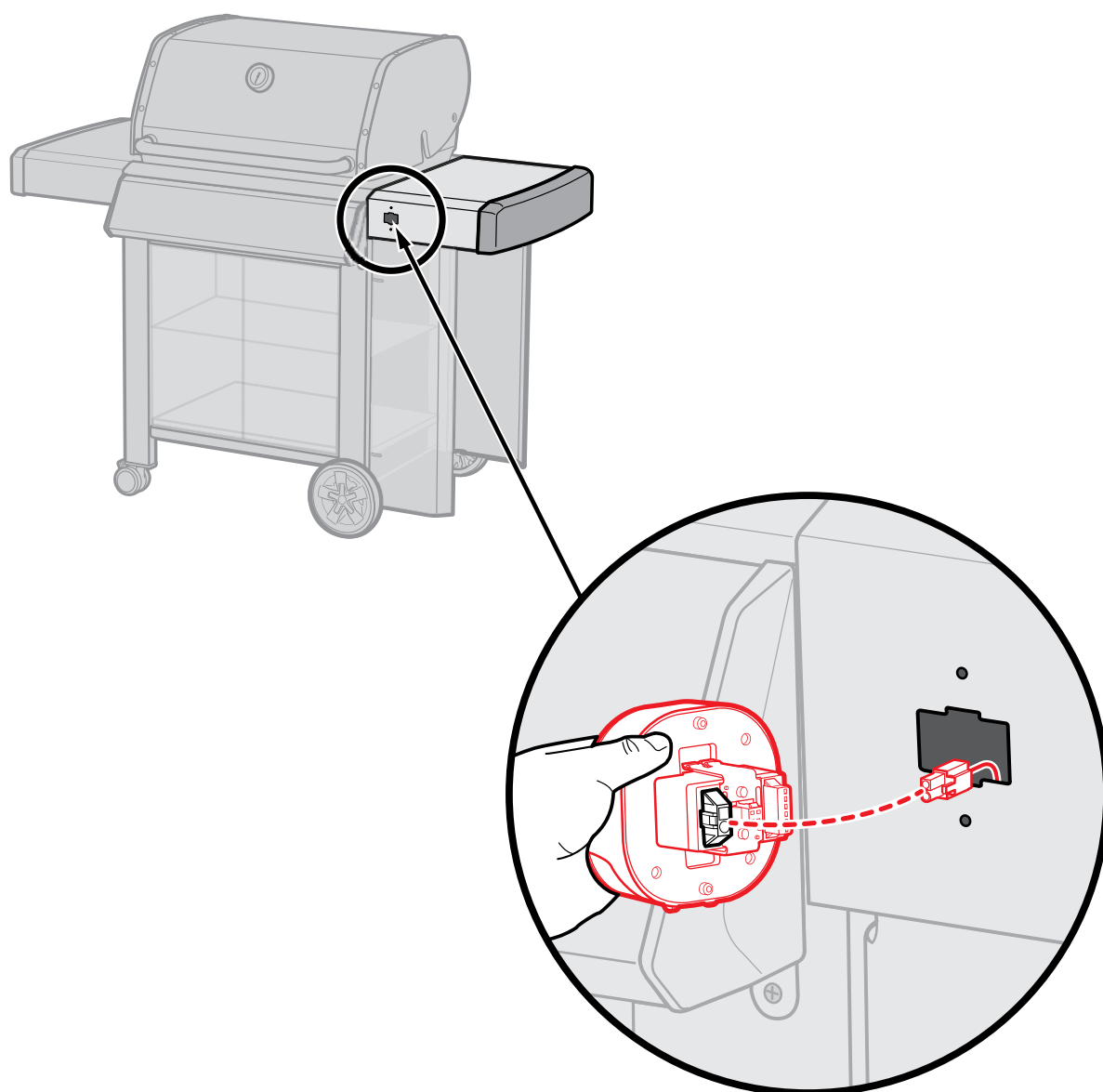
GENESIS II



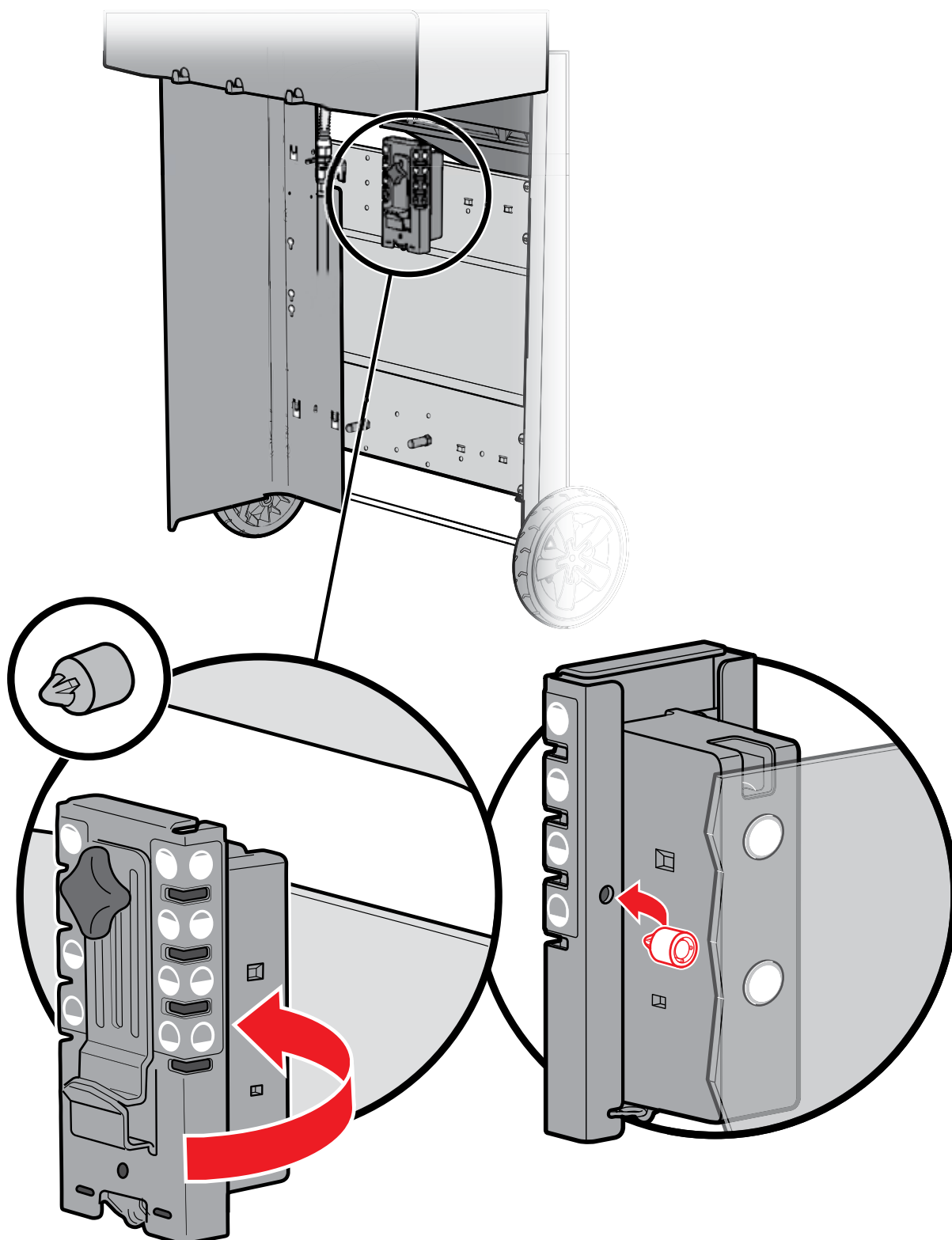
GENESIS II  
LX



Route battery wire through front of side table. Connect battery wire to the iGRILL.



Install magnet on GENESIS II models. GENESIS II LX models already have magnet installed.



6b

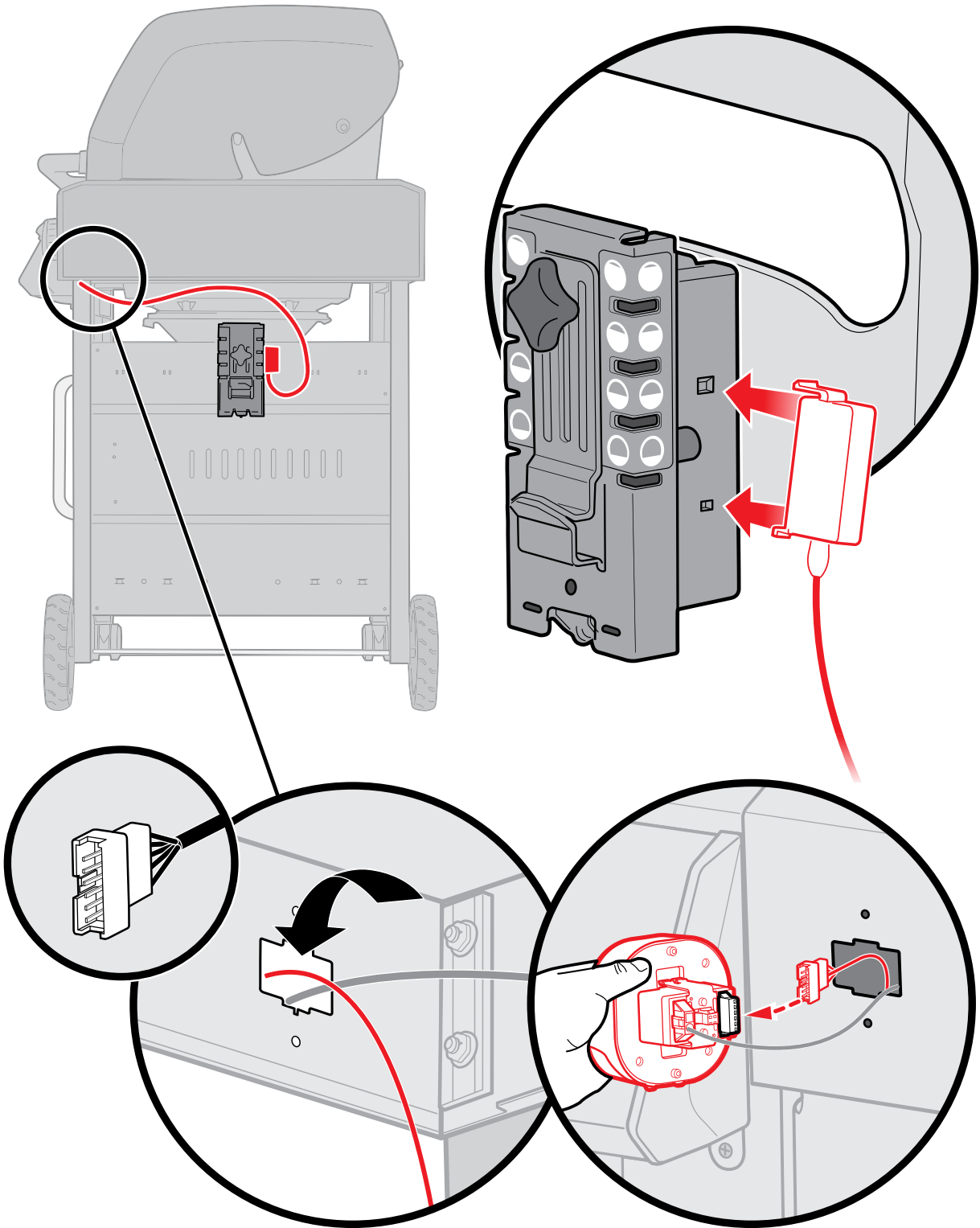
GENESIS II

 LP  NG

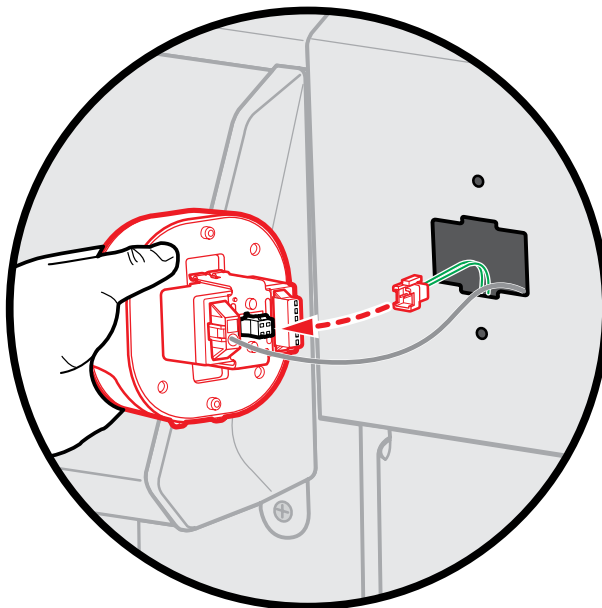
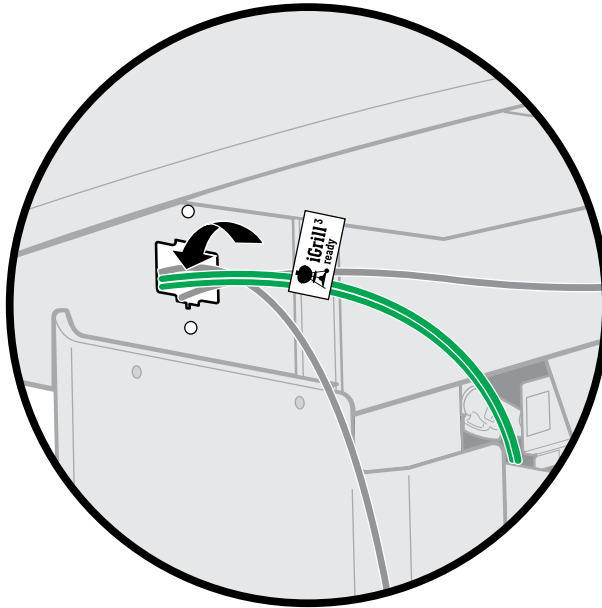
GENESIS II LX

 LP  NG

Connect LP fuel sensor.



Connect lighted control knob wires. Installation on GENESIS II LX only.





# Installation

8

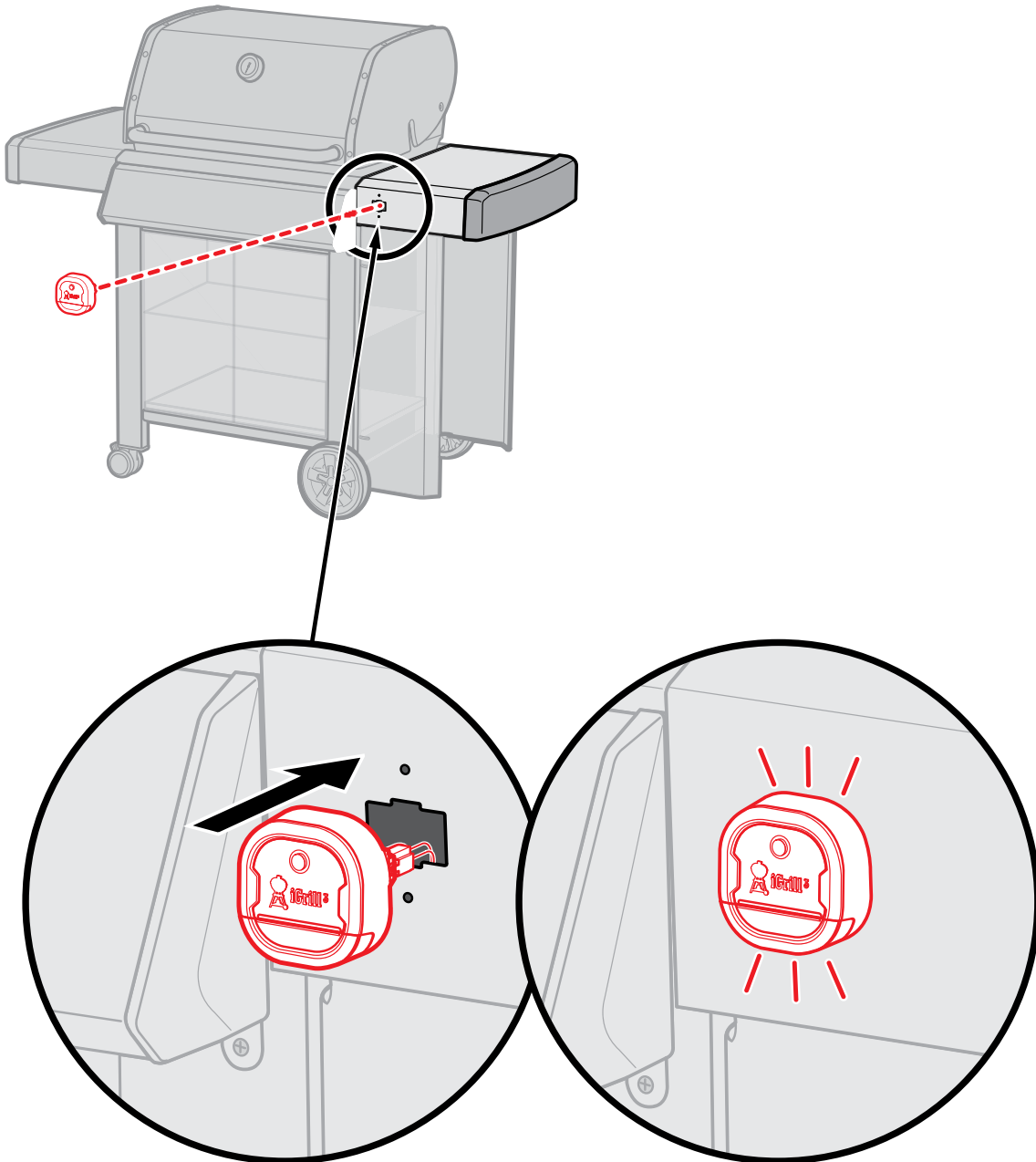
GENESIS II



GENESIS II  
LX



Snap into place. No screws required.



# Installation

9

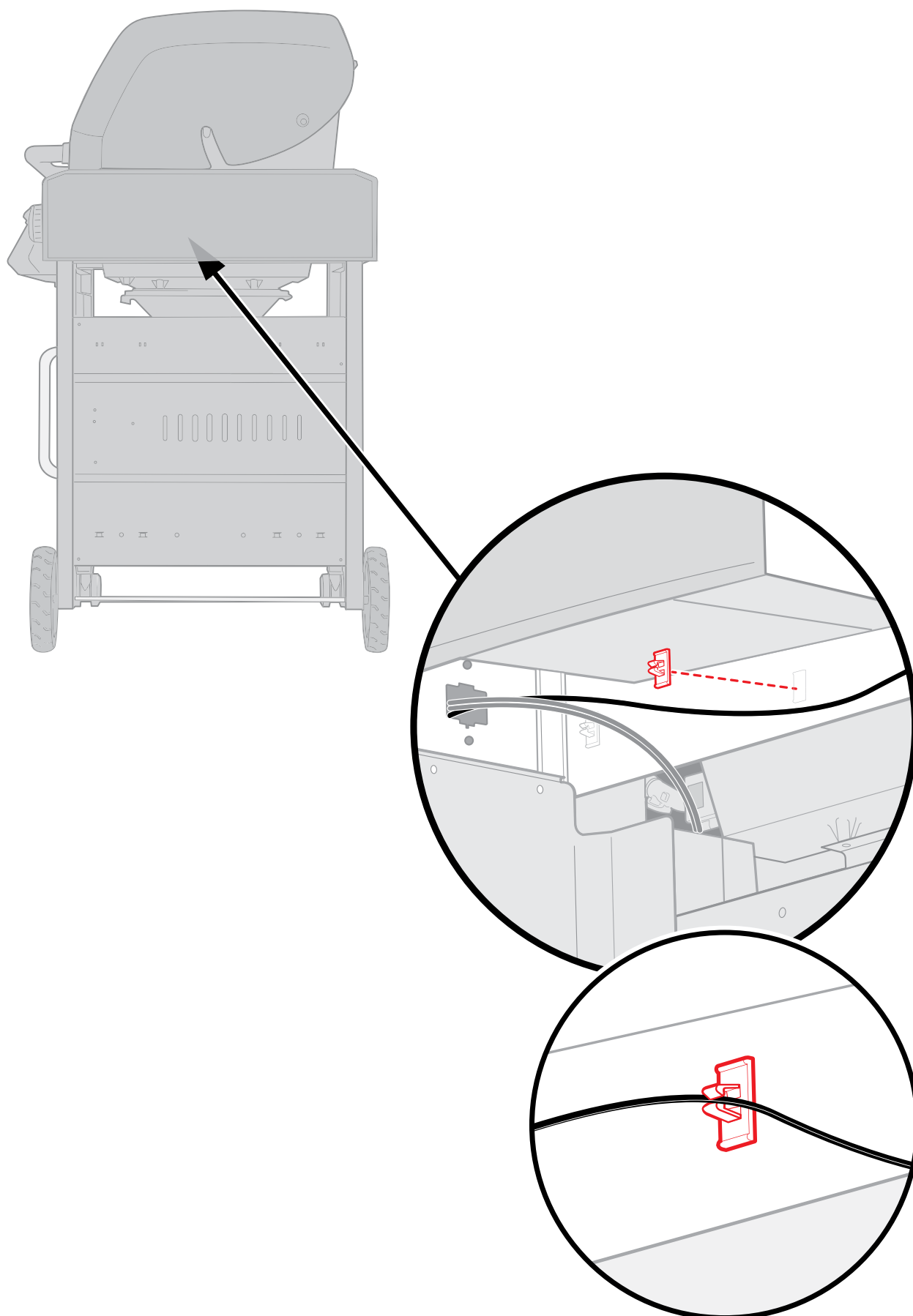
GENESIS II



GENESIS II  
LX



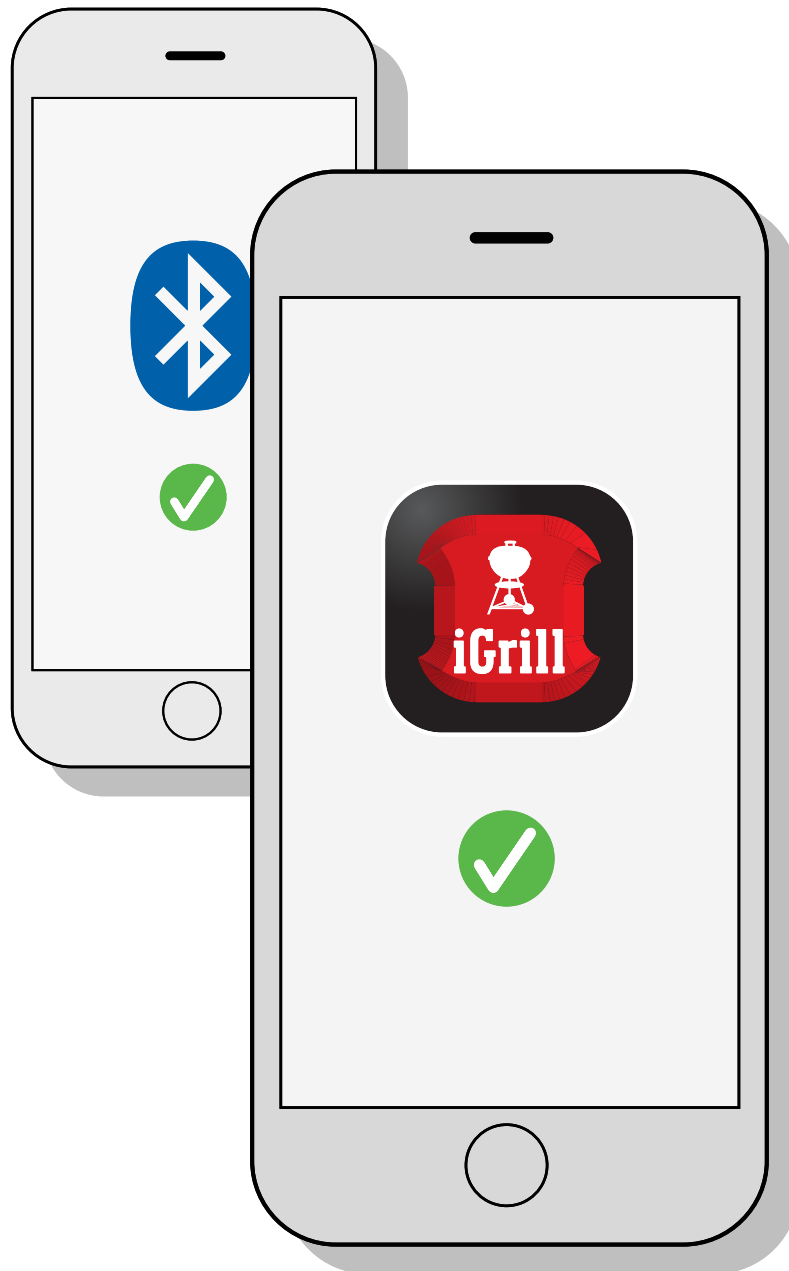
Remove adhesive liner from wire retention clip. Apply clip to cleansed area underneath side table. Black wire(s) must be secured using clip.



# Quick Start Instructions

1

WEBER iGRILL App



Download the WEBER iGRILL App.  
Then enable Bluetooth® on your  
smart device under 'Settings'.

# Quick Start Instructions

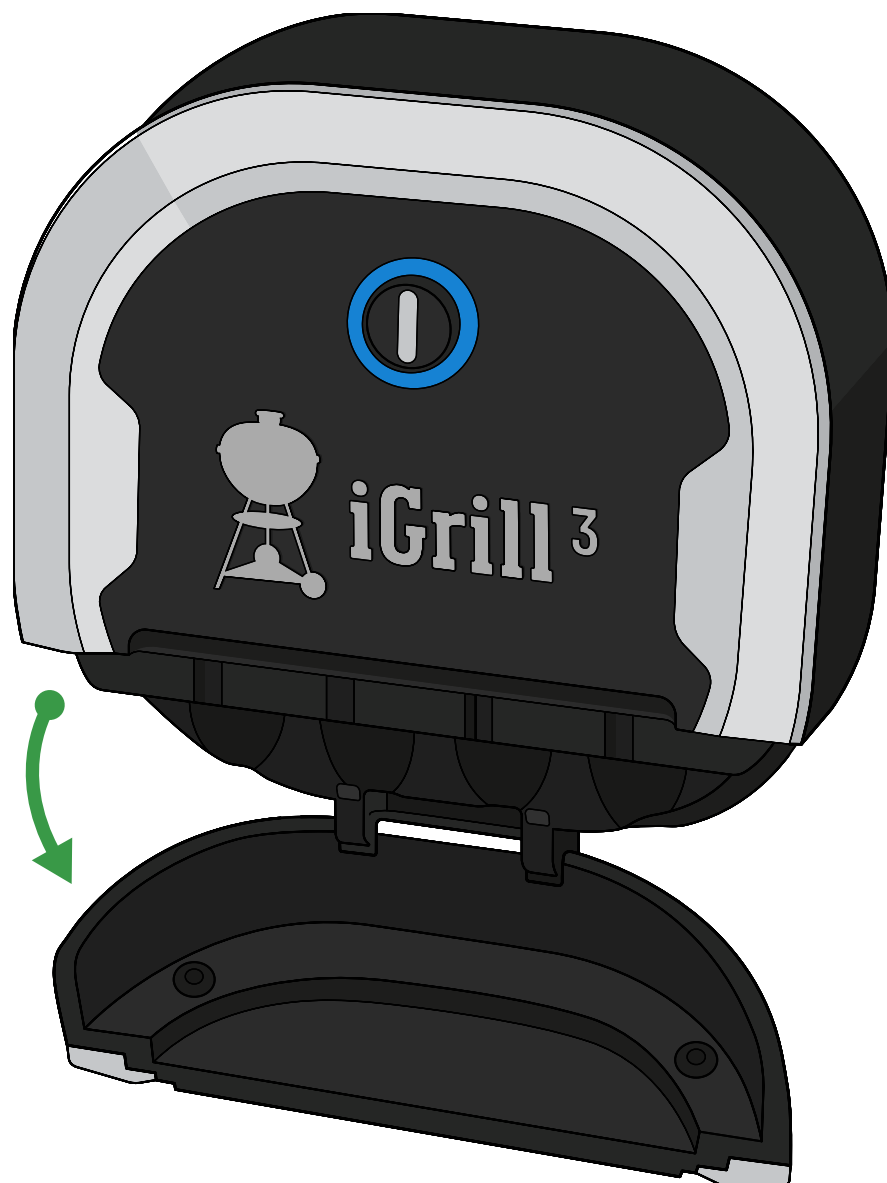
2



Press the power button once to turn on the iGRILL 3. A single beep will sound.

# Quick Start Instructions

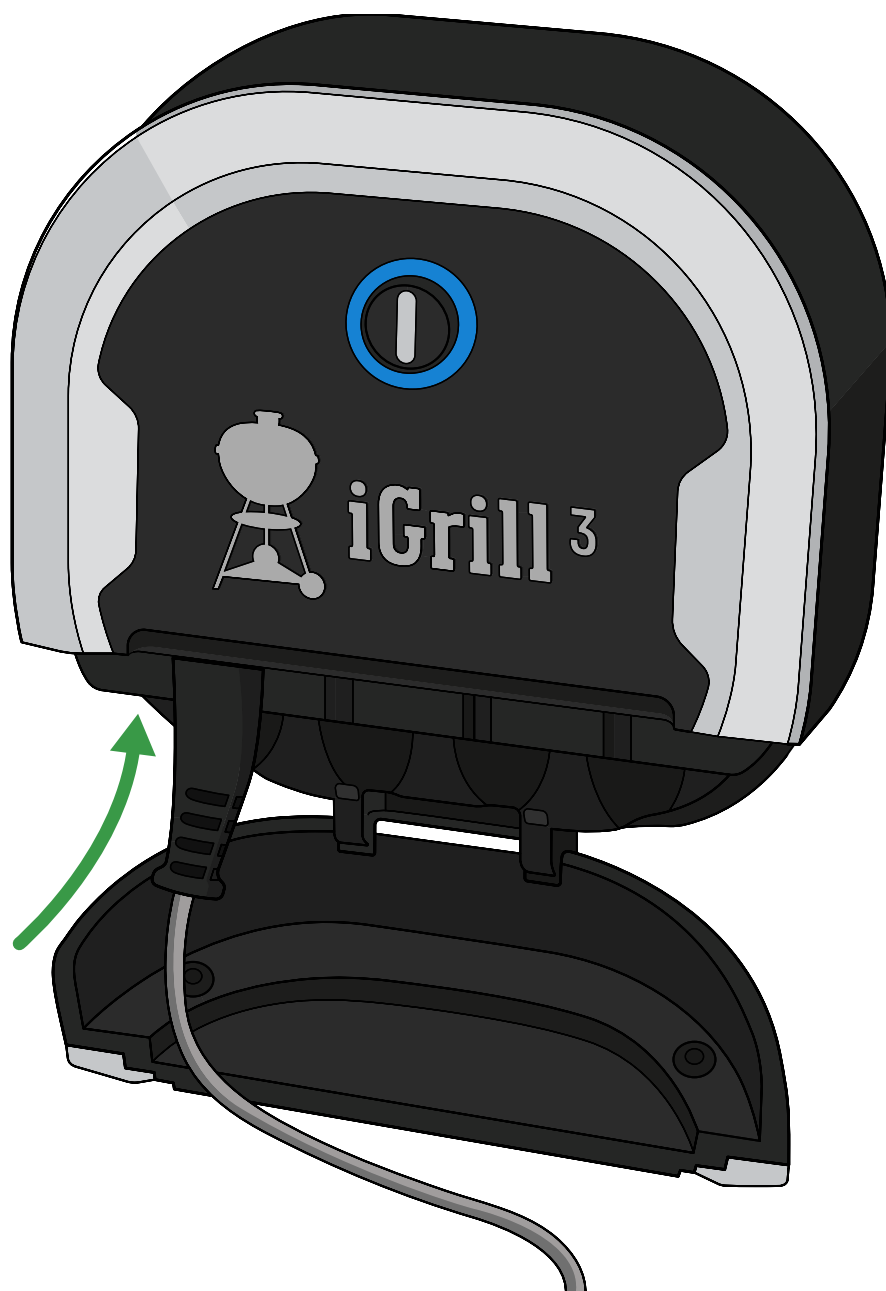
3



Open the door on the front of the iGRILL 3 to expose the probe ports.

# Quick Start Instructions

4



Plug one or more probes into the ports.



## **WARNING: Risk of burns!**

Handling the meat probes without hand protection will result in severe burns. Please wear heat-resistant gloves or mitts at all times while using this product in order to avoid being burned.



# Quick Start Instructions

5



Launch the WEBER iGRILL App on your smart device. Follow the pairing instructions within the app. You are now ready to use your iGRILL 3.

Additional information, instructional videos and barbecue inspiration can be found at [weber.com/igrillsupport](http://weber.com/igrillsupport).

# Important Information

Visit [weber.com/igrillsupport](http://weber.com/igrillsupport) to find out more about device compatibility, languages supported by the WEBER iGRILL App, a full user guide with instructional set up videos, and great barbecuing inspiration. Please read the full user guide – especially the safety information – before using the WEBER iGRILL 3 for the first time, and follow the instructions while using the device.

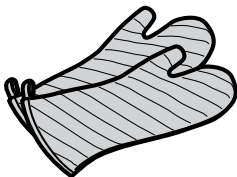
## Intended Use

Use this device only for measuring and monitoring the temperature of grilled items on WEBER iGRILL compatible products only. On the GENESIS II LX models, the knob lights can be turned on and off directly from the WEBER iGRILL App. Any use other than that which has been described may cause damage. The manufacturer or retailer are not liable for damages arising from improper use. When using an iGRILL 3, never leave your grill unattended and follow all instructions in your grill owners guide.

**Note:** The device is not to be used by children or persons with reduced physical, sensory or mental capabilities.

**Note:** Do not mix old and new batteries. Do not mix alkaline, standard or rechargeable batteries.

## Meat Probe Use



**WARNING: Risk of injury!** The probes are very sharp. Please be careful when handling the probes.



**WARNING: Risk of burns!** Handling the temperature probes without hand protection will result in severe burns. The coloured probe indicators are not intended to be touched with bare hands while using the barbecue as they are not heat-insulated. Please wear heat-resistant gloves at all times while using this product in order to avoid being burned.

**Important Note:** When using probes, be sure to route wire where it will not be exposed to flames or temperatures exceeding 716° F (380° C). Avoid exposing probes to temperatures below -22° F (-30° C). Temperatures below -22° F (-30° C) or above 572° F (300° C) will not display in the app and will cause the probe to disappear from connection.

Clean the probes before first use. The probes are not dishwasher safe. Do not use chemicals or abrasive detergents to clean the probes. Wipe down the probes with a damp towel or cleaning wipe. Take care not to expose the probe's wiring or the area where the wiring meets the probe to liquid .

The probes are not waterproof and damage may result from water exposure. Never submerge the probes in water.

# Disposal Requirements



**WARNING: Battery disposal!** Never dispose of batteries in an open fire. Always dispose of batteries in accordance with local laws.

# Technical Specifications

**Frequency Range (MHz): 2402.0 - 2480.0 MHz**

**Output Power (Watts): 0.0012 W**

# FCC Compliance

This equipment has been tested and found to comply with the rules for white space devices, pursuant to part 15 of the FCC rules. These rules are designed to provide reasonable protection against harmful interference. This equipment generates, uses and can radiate radio frequency energy and, if not installed and used in accordance with the instructions, may cause harmful interference to radio communications. If this equipment does cause harmful interference to radio or television reception, which can be determined by turning the equipment off and on, the user is encouraged to try to correct the interference by one or more of the following measures:

- (1) Reorient or relocate the receiving antenna.
- (2) Increase the separation between the equipment and receiver.
- (3) Connect the equipment into an outlet on a circuit different from that to which the receiver is connected.
- (4) Consult the manufacturer, dealer or an experienced radio/TV technician for help.

Changes or modifications not expressly approved by WEBER could void the user's authority to operate this device.

# IC Compliance

This device complies with Industry Canada's licence-exempt RSSs. Operation is subject to the following two conditions:

- (1) This device may not cause interference; and
- (2) This device must accept any interference, including interference that may cause undesired operation of the device.



**Importado y Distribuido en México por:  
Weber-Stephen Products S.A. de C.V.**

ANATOLE FRANCE 139-139A  
Colonia. POLANCO III SECCION  
Del. MIGUEL HIDALGO  
CIUDAD DE MEXICO  
C.P. 11540

RFC: WPR030919-ND4

Teléfono: 01800-00-WEBER (93237)

**Imported by / importé par  
WEBER-STEPHEN (CANADA) COMPANY**

1 Roybridge Gate  
Vaughan, Ontario, CANADA  
L4H 4E6

The Bluetooth® word mark and logos are registered trademarks owned by Bluetooth SIG, Inc. and any use of such marks by Weber-Stephen Products LLC is under licence. Other trademarks and trade names are those of their respective owners.

